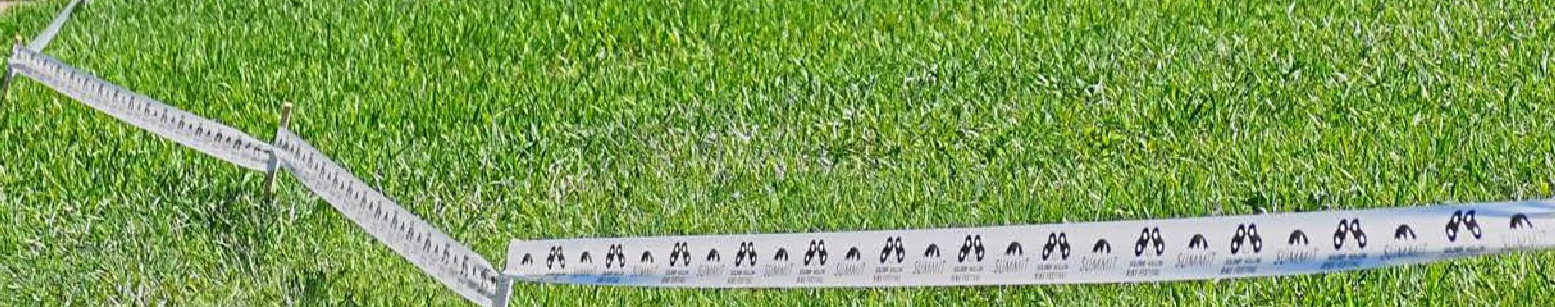




SOLDIER HOLLOW
BIKE FESTIVAL
TECH GUIDE

JUNE 26 - 29, 2025





CONTENTS

3	STAFF, OFFICIALS, INTRODUCTION
4	UCI REQUIREMENTS
5	ABOUT SOLDIER HOLLOW
8	REGISTRATION, PERMITTING, LICENSING
9	CALL UPS, AMATUER CATEGORIES
10	SCHEDULE
11	SCORED CATEGORIES
12	UCI PRIZE LIST AND POINTS
13	PACKET PICK-UP, LODGING
14	DIRECTIONS, PARKING
15	VENUE MAP
16-17	TRAIL MAPS

WELCOME TO HEBER VALLEY AND SOLDIER HOLLOW. THE SOLDIER HOLLOW BIKE FESTIVAL IS A WEEKEND OF ALL THINGS BICYCLES FOR INDIVIDUALS OF ALL AGES AND EXPERIENCE.

This technical guide covers valuable information needed for participation in the mountain biking activities for riders in the UCI categories.

ADDITIONAL INFO
www.sohobikefest.com

STAFF

Race Director: Josh Korn Announcer: Matt Heimbürger
Event Manager: Josh Korn Volunteer Coordinator: Kenzie Benion
Course Manager: Bill Pierce Marketing: Melanie Welch
Soldier Hollow General Mgr: Luke Bodensteiner

Timing Provided by: One2Go Results

OFFICIALS

UCI PCP
Jim Bratrud
Jim.bratrud@me.com

Secretary
Tobin Behling
tobin@behling.com

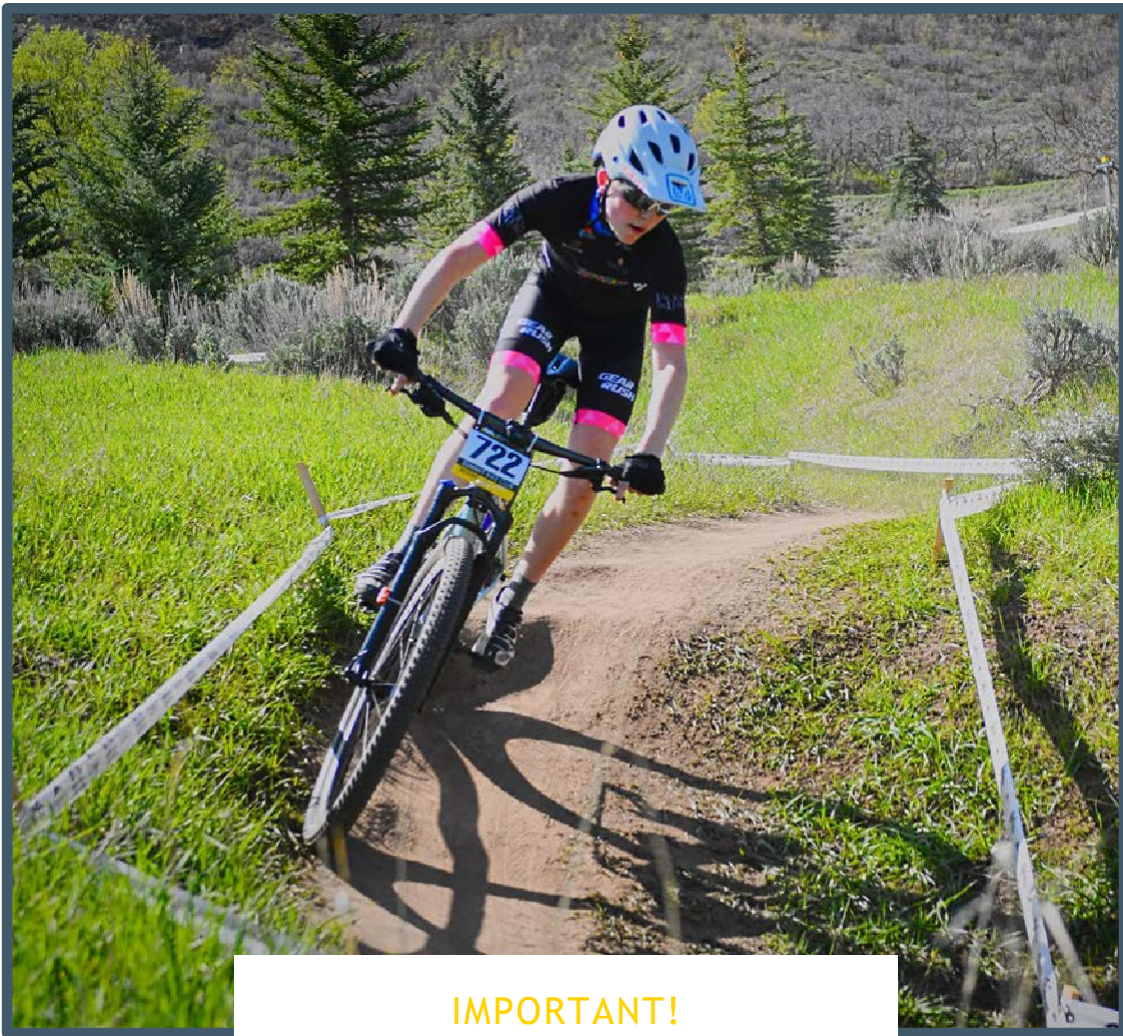
USAC Member
Jurgen Heise
Jurgen.heise@ttu.edu

USAC APCP
Justin Evans
jevans@usacycling.org

USAC Member
Amy Thaller
amy.thaller@gmail.com

USAC Finish Judge
Holly Blanco
blancoholly@yahoo.com

ONLINE REGISTRATION
<https://www.bikereg.com/sohobikefest>



IMPORTANT! PLEASE READ!

The 2025 SOHO Bike Fest is sanctioned by the UCI and USA CYCLING. ALL athletes need either a UCI or USAC license PRIOR to registration. Link for licenses - <https://memberships.usacycling.org/>

Athletes MUST declare their category PRIOR to registration. Race Organizers and Officials CANNOT process upgrades at the event. USAC One Day Licenses are available for entry level categories during Registration for \$15 - <https://www.bikereg.com/sohobikefest>. All riders registered in the UCI events MUST hold an active and valid international license, not just a UCI ID.

NICA Parents/Athletes - USA Cycling Categories differ from NICA Categories

Cat 3 - Beginner/Novice (Freshman/JV)

Cat 2 - Intermediate/Advanced (JV/Varsity)

Cat 1 - Expert (Varsity)

Please note: USA Cycling Racing Age and Scoring will be based on the athletes age as of December 31, 2025.



ABOUT SOLDIER HOLLOW

Soldier Hollow is located in the southeasternmost part of Wasatch Mountain State Park, a 21,592 acres nature preserve created in 1961, which became a state park in 1968. The Soldier Hollow venue was one of only three which was built and designed by the Salt Lake Organizing Committee (SLOC) specifically for the 2002 Winter Olympics: with the others being the Utah Olympic Park and Utah Olympic Oval.

During the 2002 games Soldier Hollow hosted the biathlon, cross-country skiing, and Nordic combined events. The venue itself hosted 64,160 biathlon spectators, 99,320 cross-country spectators, and 1,794 Nordic combined spectators during these events. To this day, Soldier Hollow continues to play an integral role in the development of youth and elite Nordic skiers with year-round training, and competitions from junior championships to biathlon world cups. Summer activities have started to grow, with mountain bike events, weddings, and mud runs all being popular.



TECHNICAL GUIDE AND REGULATIONS

This guide covers procedures and information needed to participate in the SoHo Bike Fest, occurring June 26 - 29, 2025.

A 2025 U.C.I. racing license is required for Elite Men and Women and for Junior Men and Women. Number plates are also required for training and riders must be registered first prior to training. Any rider not registered or running number plate on training day is subject to UCI fine.

Registration

The race is open to all UCI and USAC license holders (and one-day license holders). Online Registration is now open at <https://www.bikereg.com/sohobikefest>

Registration closes at 5:00pm MDT pm on Wednesday, June 25, 2025. No registrations will be accepted after online registration closes. THERE IS NO ONSITE REGISTRATION.

Permitting

The races shall be sanctioned and run under the regulations of USA Cycling and the UCI.

Friday:

US Pro Cup Elite (XCC) Men/Women - C3
Continental Jr. Series (XCC) Jr. 17-18 M/W - Continental payout

Saturday:

US Pro Cup Elite (XCO) Men/Women - C3
Continental Jr. Series (XCO) Jr. 17-18 M/W - Continental payout

Sunday:

UCI Junior (XCO) Men/Women
US Pro Cup UCI U23 (XCO) Men/Women

Licensing

The Soldier Hollow Bike Fest shall offer six UCI categories; Elite Men and Elite Women and Junior Men and Junior Women, UCI U23 Men and UCI U23 Women. UCI Regulations shall be enforced for both Elite and Junior fields and the UCI Scale of Penalties shall apply. Valid 2025 UCI international licenses are required for all UCI categories. Holders of UCI international licenses that do not bear a photograph will be required to present an approved and valid government photo ID along with their racing license.

<https://www.uci.org/discipline/mountain-bike/4LArSj7CKcytMrGEDtKwkb?discipline=MTB>

A valid USA Cycling (USAC) license or one-day license is required. Athletes must register and race under the category on the license. Onsite USAC license upgrades or downgrades cannot be processed and must be processed through USA Cycling prior to the event.



Call-Ups

The call-up procedure will be as follows:

1. UCI XCO ranking
2. USA Cycling National Champion
3. Top 5 US Pro Cup ranked riders
4. USAC XC rankings*
5. Foreign National Team Riders

* After all riders with UCI points and the next 10 USA Cycling ranked riders (above), the top 2 riders (as provided by a national representative) from each nation (those not holding a USA Cycling license), will be slotted in. Then, the process continues.

80% Rule

As per the UCI Regulations, the 80% Rule is in effect for both the Men and Women Elite and UCI Junior XCO categories. Riders instructed by the Commissaires to withdraw from the race at the 80% Zone must do so.

USAC Amateur Categories

USAC Amateur Categories will be scored based on category, gender, and age group.

Age Groups (Based on racers age as of 12/31/2025)

- Junior (11-12, 13-14, 15-16, 17-18)
- Amateur (19+, 19-29, 30-39, 40-49, 50+)
- UCI (Jr., U23, Elite)

Adult/Open 19+ categories: Category Cat 1, Category 2

Junior Categories, Cat 1, 2 and 3 will all be scored separately.

Some age groups may be combined based on registration.

SCHEDULE

Schedule and distances subject to change

Wednesday | June 25, 2025

REGISTRATION ENDS at 5:00 pm MDT (NO REGISTRATION ON RACE DAY)

Thurs | June 26, 2025

12:00 pm - 8:00 pm	Team Set-Up
1:00 pm - 8:00 pm	Packet Pick-Up
2:00 pm - 8:00 pm	Course Pre-Ride

*Reserve your Team (Tech Parking) - <https://www.bikereg.com/sohobikefest>

Questions: Jkorn@uolf.org

Friday | June 27, 2025

XCC Short Track Course: 1.2 km - 26m climbing per lap

7:00am - 3:00pm	Packet Pick Up (comp building)
9:00 am	Junior Men 17-18 Qualifier 1 (if over 75 athletes)
9:30 am	Junior Men 17-18 Qualifier 2 (if over 75 athletes)
10:00 am	Junior Women 17-18
10:30 am	Elite Women
11:00 am	Elite Men
11:45 am	Junior Men Final (top-60)
12:30 pm	AWARDS - Awards plaza (east side of comp building)
1:30 pm	Junior Men 15-16 Qualifier 1 (if over 75 athletes)
2:00 pm	Junior Men 15-16 Qualifier 2 (if over 75 athletes)
2:30 pm	Open Men 19+
3:00 pm	Open Women 19+ / Junior Women 15-16
3:30 pm	Junior Boys 11-14
3:50 pm	Junior Girls 11-14
4:15 pm	Junior Men 15-16 final (top-60)
5:00 pm	AWARDS - Awards plaza (east side of comp building)

SCHEDULE (CONTINUED)

SATURDAY | June 28, 2025

XCO Blue Course: 4.8km - 151m climbing/lap

XCO Black Course: 5.1k - 195m climbing/lap

6:00am - 6:30 pm Packet Pick Up (comp building)

Blue Course

7:00 am Junior M 11-12, Cat 2 and 3
7:05 am Junior W 11-12, Cat 2 and 3
7:30 am Junior M 13-14 Cat 2
7:35 am Junior M 13-14, Cat 3
8:00 am Junior W 13-14, Cat 2 and 3
AWARDS - Awards Plaza (east side of comp building)

Black Course

9:00 am UCI Junior W
10:30 am UCI Junior M
AWARDS - Awards Plaza (east side of comp building)

12:00 pm UCI Elite M
2:00 pm UCI Elite W
AWARDS - Awards Plaza (east side of comp building)

Blue Course

4:00 pm Junior W 15-16, Cat 1
4:20 pm Junior W 15-16 Cat 2 and 3
5:00 pm Junior W 17-18, Cat 1, 2 and 3
5:10 pm Women Open 20-29, 30-39, 40-49, 50+, Cat 1, 2 and 3
AWARDS - Awards Plaza (east side of comp building)

6:00 pm Junior M 15-16, Cat 1
6:20 pm Junior M 17-18, Cat 1
6:25 pm Men Open 19-29, 30-39, 40-49, 50+, Cat 1
AWARDS - Awards Plaza (east side of comp building)

7:30 pm Junior M 15-16, Cat 2
7:40 pm Junior M 17-18, Cat 2
7:45 pm Men Open 19-29, 30-39, 40-49, 50+, Cat 2 and 3
7:55 pm Junior M 15-16, Cat 3
8:00 pm Junior M 17-18, Cat 3
AWARDS - Awards Plaza (east side of comp building)

SCHEDULE (CONTINUED)

SUNDAY | June 29, 2025

XCO Blue Course: 4.8km - 151m climbing/lap

XCO Black Course: 5.1k - 195m climbing/lap

7:00am - 6:00 pm Packet Pick Up (comp building)

Black Course

9:00 am	UCI Junior W
10:30 am	UCI Junior M
	AWARDS - Awards Plaza (east side of comp building)
12:00 pm	UCI U23 M
2:00pm	UCI U23 W
	AWARDS - Awards Plaza (east side of comp building)

Blue Course

4:00 pm	Junior M 15-16, Cat 1 and 2
4:10 pm	Junior M 17-18, Cat 1 and 2
4:25 pm	Men Open 19-29, 30-39, 40-49, 50+, Cat 1 and 2
	AWARDS - Awards Plaza (east side of comp building)
6:00 pm	Junior W 15-16, Cat 1
6:05 pm	Junior W, 15-16, Cat 2
6:30 pm	Junior W, 17-18, Cat 1 and 2
7:15 pm	Women Open 19-29, 30-39, 40-49, 50+, Cat 1 and 2
	AWARDS - Awards Plaza (east side of comp building)

Results and Awards

Awards will take place, per the schedule above. Results will be posted adjacent to the Awards Plaza on the east side of the Comp Building.

Official Results will be posted on the event website: sohobikefest.com and on One2Go Results page.

Medals will be given to the Top 3. Podiums will include only the Top 3.

UCI Prize List

All athletes need to fill out a w-9 prior to leaving the venue to receive prize money. Based on UCI exchange rate. Prize money will be mailed to the athlete in the weeks prior to the event.



Mountain Bike - Prize Money

For races not in Group 1 federation, the percentage shown on page 10 shall be applied to the amount below (fractions must be rounded up).
 Pour toute course en dehors d'une fédération de Groupe 1, il faut appliquer le pourcentage de la page 10 aux montants ci-dessous (arrondi à l'euro supérieur).

MINIMUM PRIZE MONEY FOR ONE-DAY RACES / MONTANTS MINIMUMS DES PRIX EPREUVES D'UNE JOURNEE

Ranking / Classement	HC					Class 1 / Classe 1				
	XC		M&W / H&F Juniors	DHI	4X	XC		M&W / H&F Juniors	DHI	4X
	M&W / H&F Elite	M&W / H&F U23*				M&W / H&F	M&W / H&F			
1st / 1er	1'000 €	400 €	200 €	1'000 €	500 €	600 €	265 €	130 €	600 €	400 €
2nd / 2ème	800 €	265 €	130 €	800 €	350 €	500 €	200 €	100 €	500 €	300 €
3rd / 3ème	600 €	200 €	100 €	600 €	200 €	400 €	130 €	80 €	400 €	250 €
4th / 4ème	500 €	165 €	80 €	500 €	100 €	300 €	100 €	65 €	300 €	200 €
5th / 5ème	400 €	130 €	65 €	400 €	50 €	250 €	65 €	55 €	250 €	150 €
6th / 6ème	300 €	100 €	50 €	300 €	50 €	200 €	50 €	45 €	200 €	100 €
7th / 7ème	250 €	80 €	45 €	250 €	50 €	150 €	30 €	40 €	150 €	75 €
8th / 8ème	200 €	65 €	30 €	200 €	50 €	125 €	30 €	30 €	125 €	50 €
9th / 9ème	150 €	50 €	25 €	150 €		100 €	30 €	25 €		
10th / 10ème	100 €	30 €	20 €	100 €		50 €	30 €	20 €		
Total	4'300 €	1'485 €	745 €	4'300 €	1'350 €	2'675 €	930 €	590 €	2'525 €	1'525 €
Total M&W / H&F	8'600 €			8'600 €	2'700 €	5'350 €			5'050 €	3'050 €

Ranking / Classement	Class 2 / Classe 2				Class 3 / Classe 3					
	XC		M&W / H&F Juniors	DHI	4X	XC		M&W / H&F Juniors	DHI	4X
	M&W / H&F Elite	M&W / H&F U23*				M&W / H&F	M&W / H&F			
1st / 1er	€ 250		€ 80	€ 250	€ 200	€ 200		€ 65	€ 200	€ 150
2nd / 2ème	€ 200		€ 65	€ 200	€ 150	€ 150		€ 50	€ 150	€ 100
3rd / 3ème	€ 150		€ 50	€ 150	€ 125	€ 100		€ 30	€ 100	€ 75
4th / 4ème	€ 125		€ 30	€ 125	€ 100	€ 75		€ 25	€ 75	€ 50
5th / 5ème	€ 100		€ 25	€ 100	€ 90	€ 50		€ 20		
6th / 6ème	€ 90			€ 90	€ 80					
7th / 7ème	€ 80			€ 80	€ 70					
8th / 8ème	€ 70			€ 70	€ 60					
9th / 9ème	€ 60									
10th / 10ème	€ 50									
Total	€ 1'175		€ 250	€ 1'065	€ 875	€ 575		€ 190	€ 525	€ 375
Total M&W / H&F	€ 2'350			€ 2'130	€ 1'750	€ 1'150			€ 1'050	€ 750

*M/W U23 prize money scale only when a split race is organised for those categories, if not, the Elite prize money scale will be applied. / *Barème de prix H/F U23 uniquement si épreuve séparée pour ces catégories, sinon le barème Elite est appliqué

Ranking / Classement	Continental Series / Série Continentale *				
	XC			DHI	
	M&W / H&F Elite	M&W / H&F U23*	M&W / H&F Juniors	M&W / H&F	M&W / H&F Juniors
1st / 1er	500 €	250 €	120 €	500 €	120 €
2nd / 2ème	400 €	200 €	100 €	400 €	100 €
3rd / 3ème	300 €	150 €	75 €	300 €	75 €
4th / 4ème	250 €	125 €	60 €	250 €	60 €
5th / 5ème	200 €	100 €	50 €	200 €	50 €
6th / 6ème	150 €	75 €	40 €	150 €	40 €
7th / 7ème	100 €	50 €	25 €	100 €	25 €
8th / 8ème	80 €	40 €	20 €	80 €	20 €
9th / 9ème	60 €	30 €		60 €	
10th / 10ème	40 €	20 €		40 €	
Total	2'080 €	1'040 €	490 €	2'080 €	490 €
Total M&W / H&F	4'160 €	2'080 €	980 €	4'160 €	980 €

UCI Points

CHAMP. NATIONAUX NATIONAL CHAMP.			EPREUVE D'UN JOUR ONE DAY RACE							
			Hors Classe		Classe 1		Classe 2 / COUPE du MONDE XCE / XCE WORLD CUP	Classe 3	XCO JUNIOR SERIES	XCO Junior
Elite	U23*	Junior	Elite	U23*	Elite	U23*	Elite	Elite	Junior	Junior
100	50	40	100	60	60	15	30	10	90	20
90	35	30	80	40	40	10	20	6	70	18
70	25	20	60	30	30	5	15	4	60	16
60	15	10	50	25	25	3	12	2	50	14
50	5	5	40	20	20	1	10	1	40	12
40	x	x	35	18	18	x	8	x	35	10
30			30	16	16		6		30	8
20			27	14	14		4		27	6
10			24	12	12		2		24	4
5			22	10	10		1		22	2
x			20	8	8		x		20	x
			18	6	6				18	
			16	4	4				16	
			14	2	2				14	
			12	1	1				12	
			10	x	x				10	
			9						9	
			8						8	
			7						7	
			6						6	
			5						5	
			4						4	
			3						3	
			2						2	
			1						1	
			x						x	

US Pro Cup Scoring details:

- Best 4 of 5 (note SOHO hosts 2 races for all categories except Pro XCO)

1st Place: 40 points	13th place: 13 points
2nd Place: 35 points	14th place: 12 points
3rd place: 31 points	15th place: 11 points
4th place: 28 points	16th place: 10 points
5th place: 26 points	17th place: 9 points
6th place: 24 points	18th place: 8 points
7th place: 22 points	19th place: 7 points
8th place: 20 points	20th place: 6 points
9th place: 18 points	21st place: 5 points
10th place: 16 points	22nd place: 4 points
11th place: 15 points	23rd place: 3 points
12th place: 14 points	24th place: 2 points
	25th place: 1 point

Packet Pickup & Parking

Participants must park in General Parking outside of the venue and walk to the Competition Building

Team Parking

*Reserve your Team (Tech Parking) - <https://www.bikereg.com/sohobikefest>

Questions: Jkorn@uolf.org

General Parking

Parking is available on a first-come first-served basis. There will be no priority parking available at the event.

Overnight parking allowed with OVERNIGHT parking pass, can be purchased here: <https://www.bikereg.com/sohobikefest>. No overnight security.

Directions to Venue

Soldier Hollow is located 55 miles and approximately one (1) hour from the Salt Lake International Airport.

Address: 2002 S. Olympic Dr., Midway, UT 84049

Nearby towns:

- Midway: 3 Miles
- Heber City: 6 Miles
- Park City: 21 Miles
- Orem: 24 Miles
- Salt Lake City: 49 Miles

Lodging

Heber Valley is home to a variety of lodging and dining options for teams, athletes, families, and friends, among them are Homestead and Zermatt Utah in Midway, Utah. Contact information can be found for all options on the local chamber website at www.gohebervalley.com.

Zermatt Utah

784 West Resort Drive, Midway, UT 84049

- Contact: Zermatt Sales
- rfp@zermattresorts.com

Residences at Utah Olympic Park

Book a stay to take advantage of:

- Park City's best nightly lodging rates
- Modern Hotel Rooms
- Unbeatable proximity to the Utah Olympic Park and surrounding ski resorts
- Guest kitchen and catering space to take care of all your meal needs.
- Complementary meeting/video review space

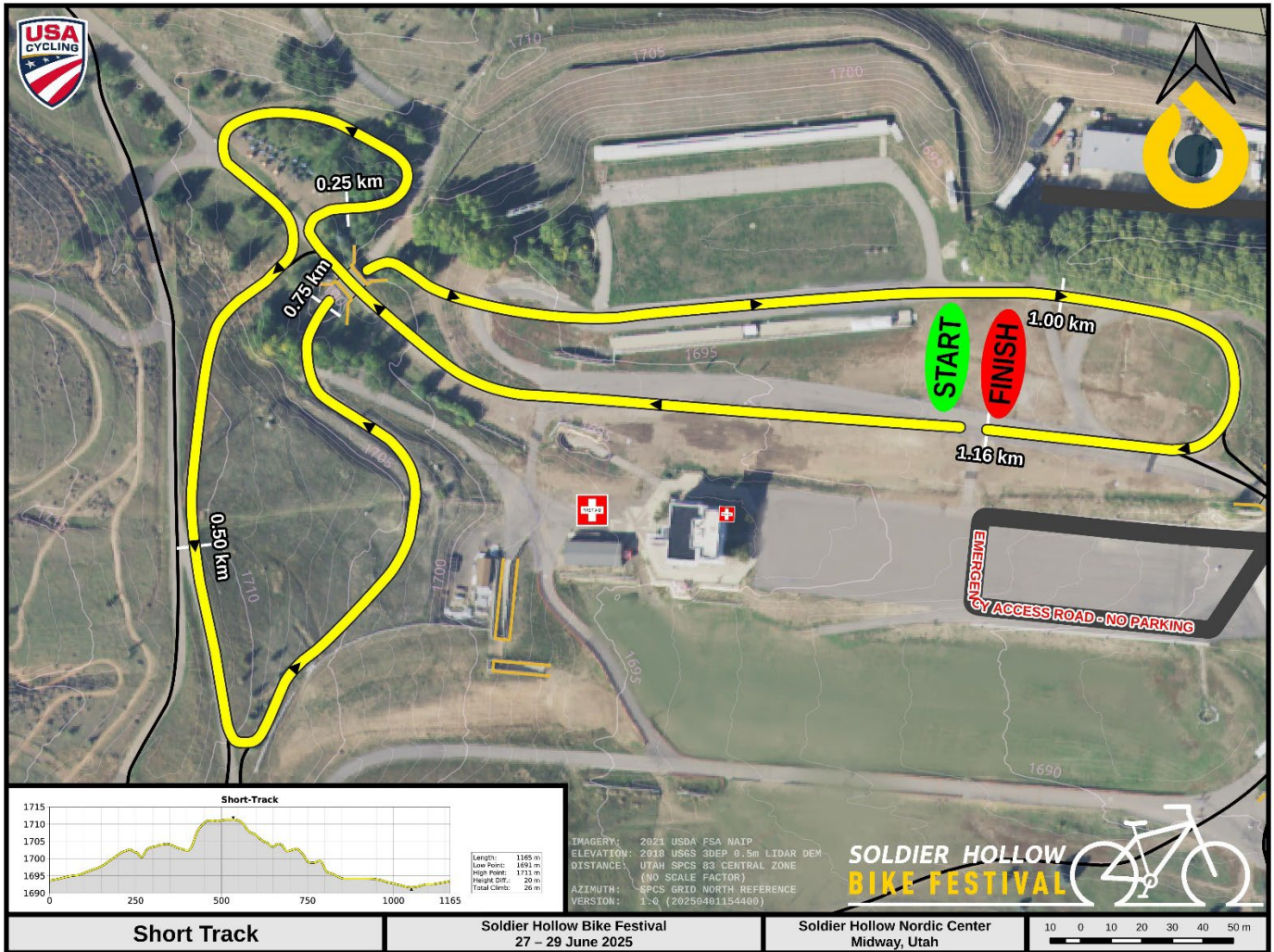
More information about our facility and accommodation can be found [here](#)

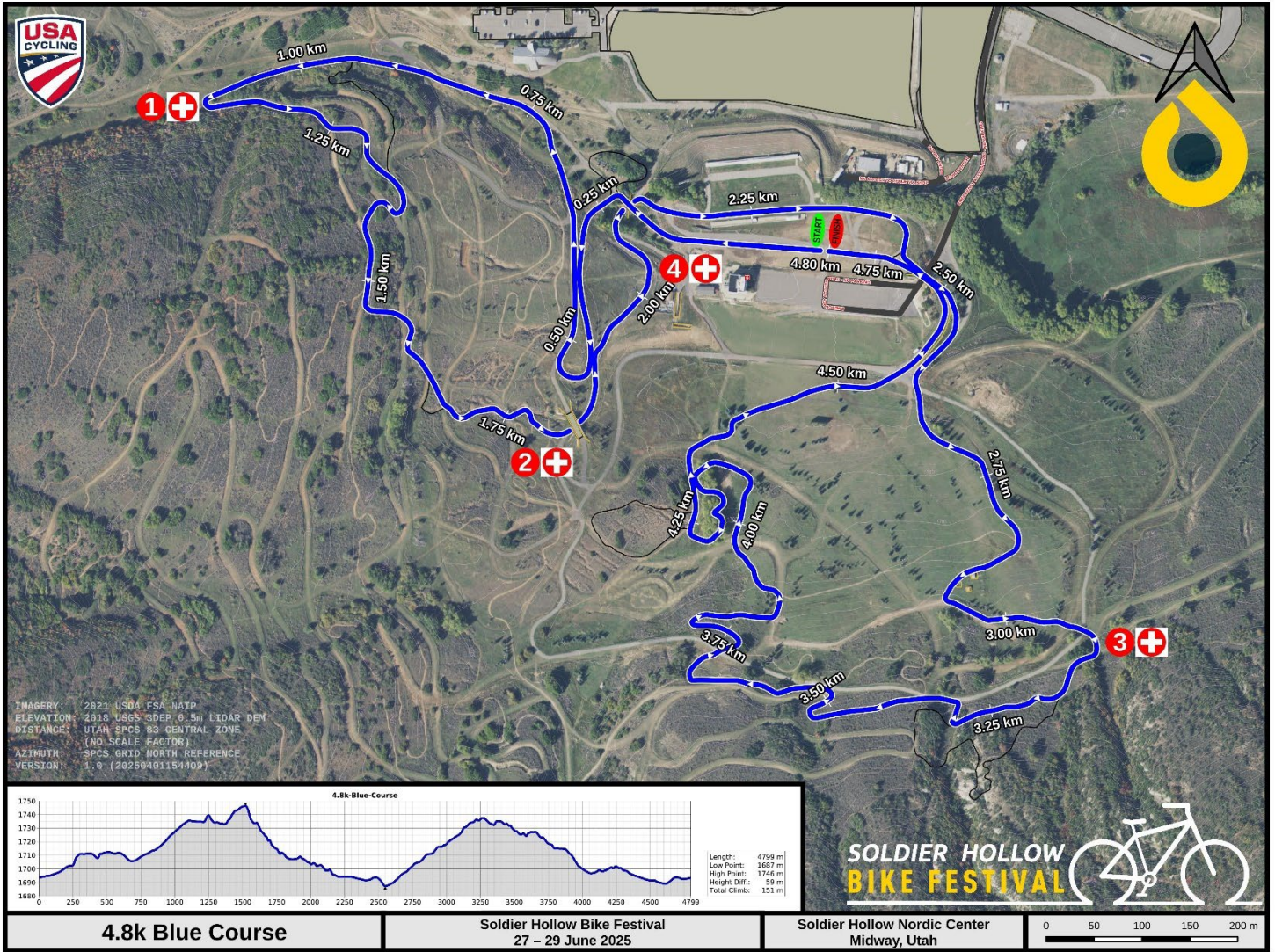
Local Camping Options:

<https://stateparks.utah.gov/parks/wasatch-mountain/>

<https://www.gohebervalley.com/camping/>

Course Maps





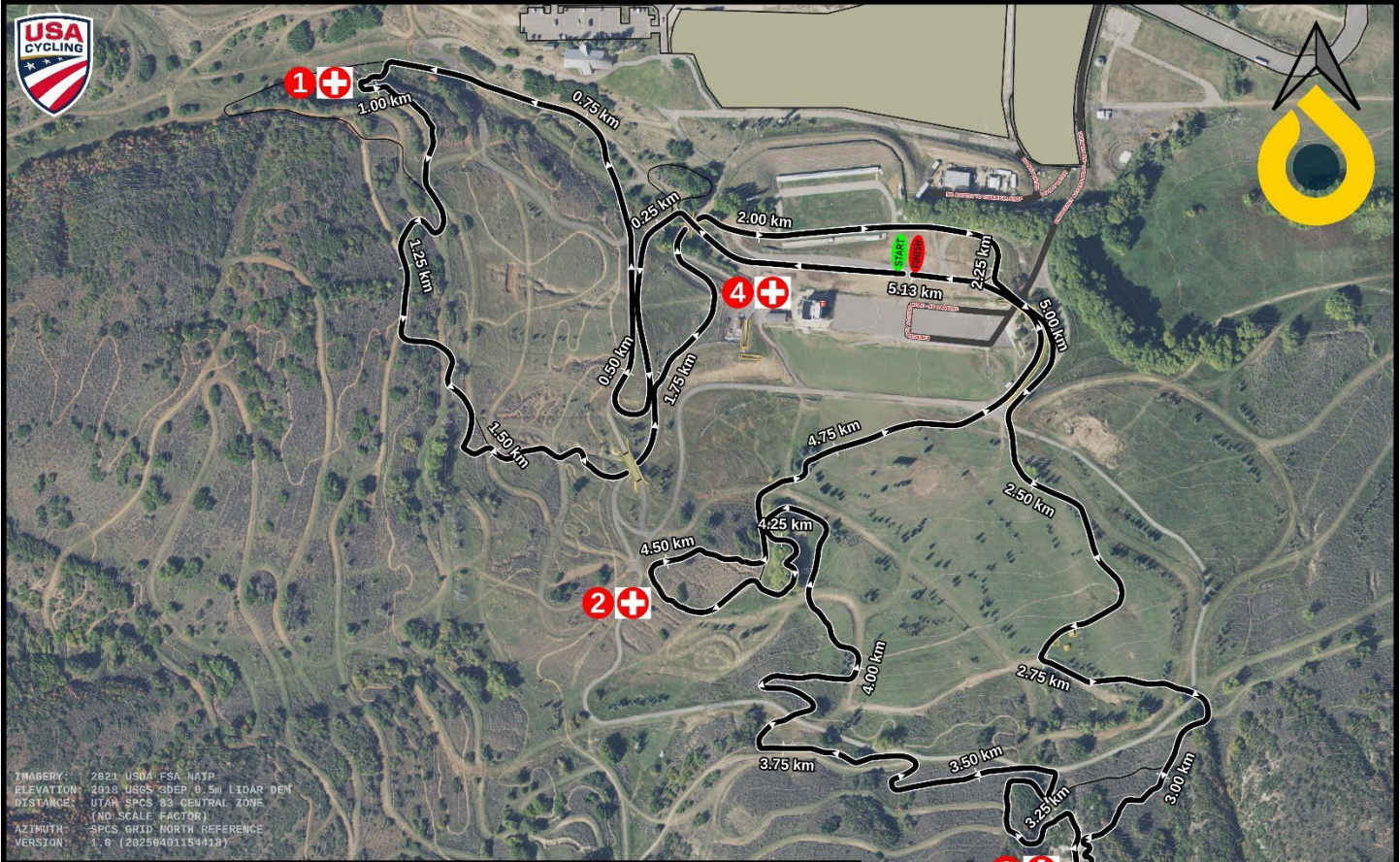
4.8k Blue Course

Soldier Hollow Bike Festival
27 - 29 June 2025

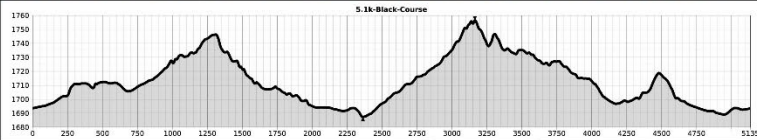
Soldier Hollow Nordic Center
Midway, Utah

BIKE FESTIVAL
MIDWAY, UT





IMAGERY: 2021 USGA FSA MAP
 ELEVATION: 2010 USGS GDEP 0.5M LIDAR DEM
 DISTANCE: UTM SPCS 83 CENTRAL ZONE
 (NO SCALE FACTOR)
 AZIMUTH: SPCS GRID NORTH REFERENCE
 VERSION: 1.0 (20250401154413)



Length: 5135 m
 Low Point: 1687 m
 High Point: 1756 m
 Height Diff: 69 m
 Total Climb: 195 m

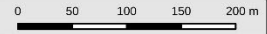
**SOLDIER HOLLOW
 BIKE FESTIVAL**



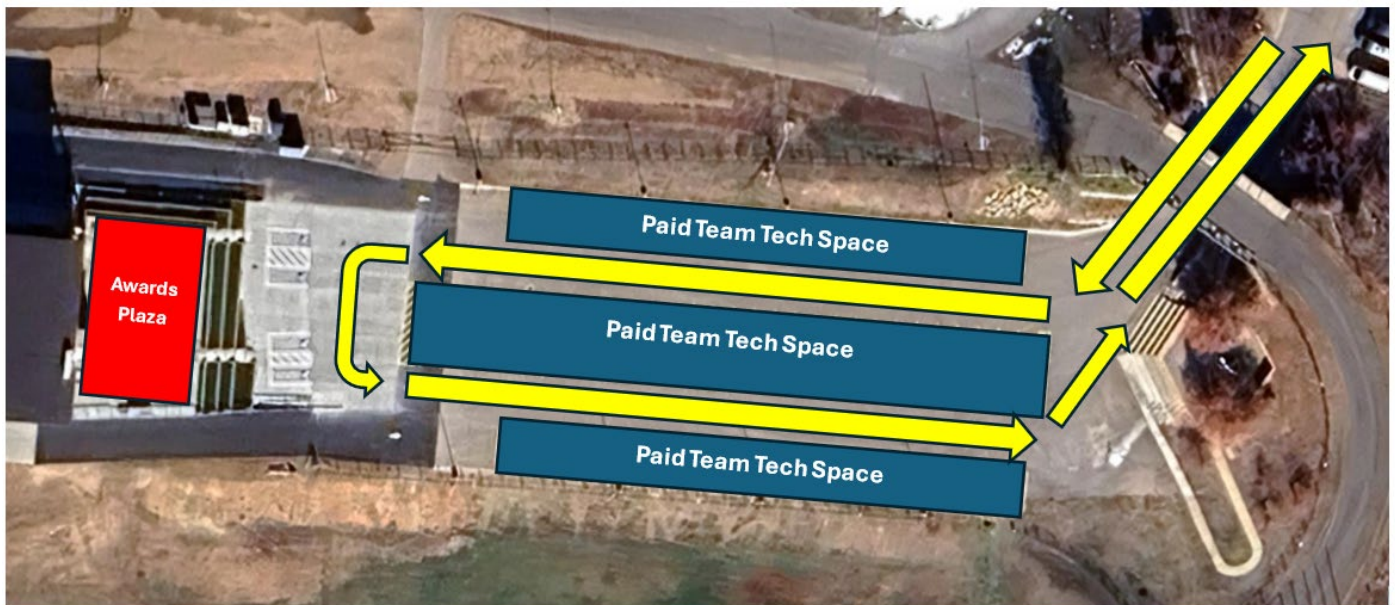
5.1k Black Course

**Soldier Hollow Bike Festival
 27 - 29 June 2025**

**Soldier Hollow Nordic Center
 Midway, Utah**



Venue Map





**SOLDIER HOLLOW
BIKE FESTIVAL**

