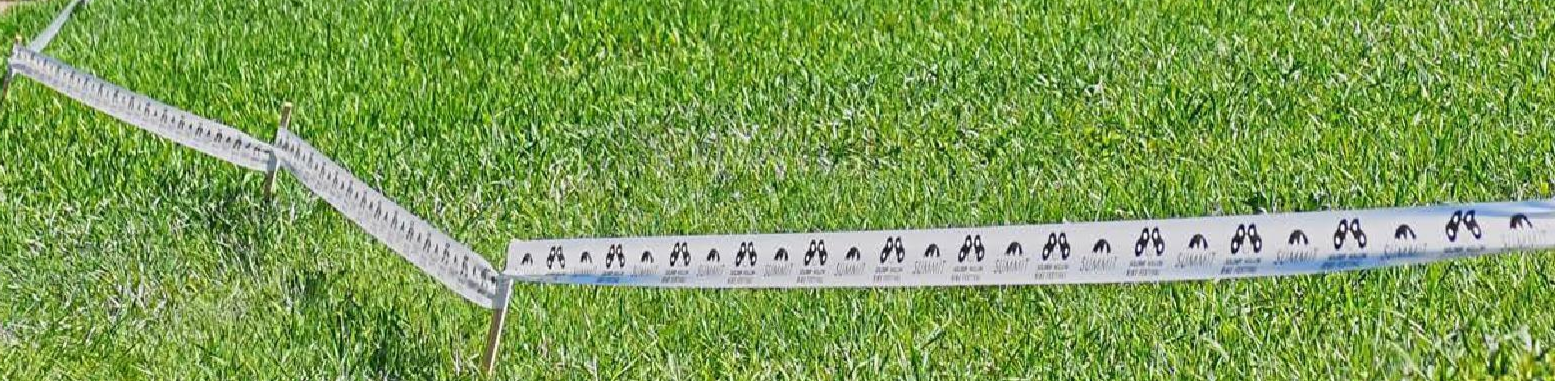


SOLDIER HOLLOW
BIKE FESTIVAL
TECH GUIDE

JUNE 25 - 28, 2026





CONTENTS

3	STAFF, OFFICIALS, INTRODUCTION
4	UCI REQUIREMENTS
5	ABOUT SOLDIER HOLLOW
8	REGISTRATION, PERMITTING, LICENSING
9	CALL UPS, AMATUER CATEGORIES
10	SCHEDULE
11	SCORED CATEGORIES
12	UCI PRIZE LIST AND POINTS
13	PACKET PICK-UP, LODGING
14	DIRECTIONS, PARKING
15	VENUE MAP
16-17	TRAIL MAPS

WELCOME TO HEBER VALLEY AND SOLDIER HOLLOW. THE SOLDIER HOLLOW BIKE FESTIVAL IS A WEEKEND OF ALL THINGS BICYCLES FOR INDIVIDUALS OF ALL AGES AND EXPERIENCE.

This technical guide covers valuable information needed for participation in the mountain biking activities for riders in the UCI categories.

ADDITIONAL INFO
www.sohobikefest.com

STAFF

Race Director: Josh Korn Announcer: Matt Heimburger
Event Manager: Josh Korn Volunteer Coordinator: Kenzie Benion
Course Manager: Bill Pierce Marketing: Melanie Welch
Soldier Hollow General Mgr: Luke Bodensteiner

Timing Provided by: One2Go Results

OFFICIALS

UCI PCP
Jim Bratrud
Jim.bratrud@me.com

Secretary
Tobin Behling
tobin@behling.com

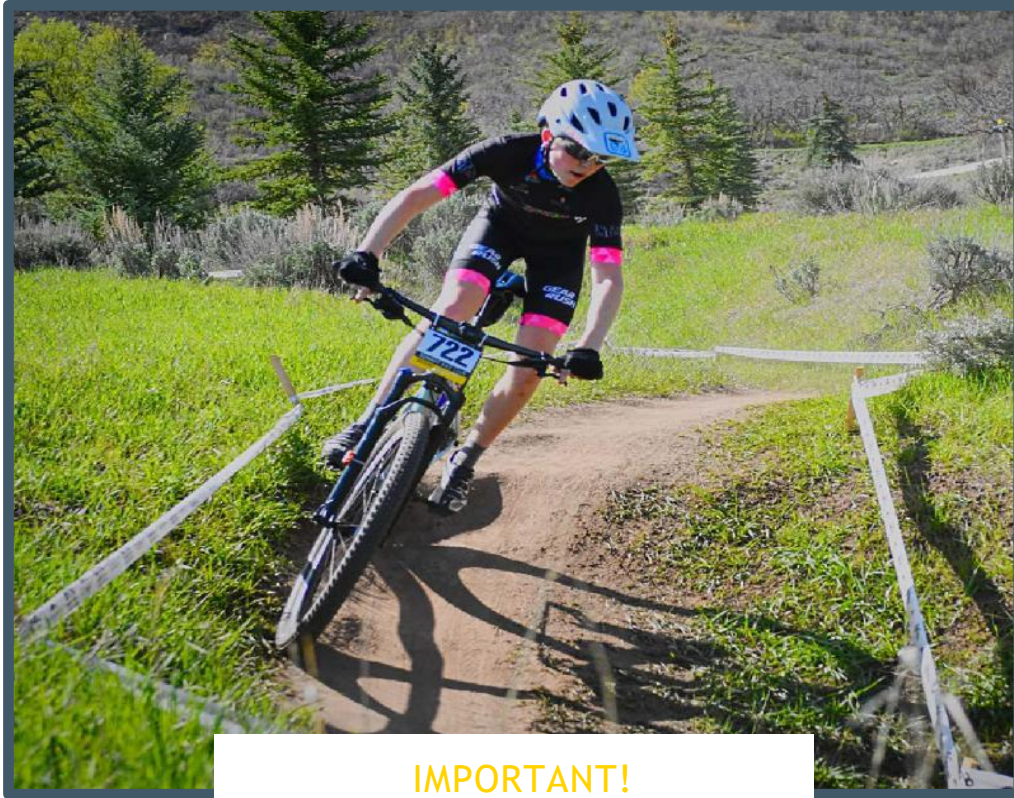
USAC Member (Nat)
Cindy Yorgason
corgason@comcast.net

Assistant PCP (Nat)
Jurgen Heise
Jurgen.heise@ttu.edu

USAC Member (Nat)
Kristen Hintze
kris.hintze@gmail.com

USAC Finish Judge
Holly Blanco
blancoholly@yahoo.com

ONLINE REGISTRATION
<https://www.bikereg.com/sohobikefest>



**IMPORTANT!
PLEASE READ!**

The 2026 SOHO Bike Fest is sanctioned by the UCI and USA Cycling. All athletes need either a UCI or USA Cycling license (and associated membership) prior to registration. Licenses can be obtained at: <https://usacycling.sport80.com/>

Athletes must declare their category prior to registration. Race organizers and officials cannot process upgrades at the event. USA Cycling one-day licenses are available for entry-level categories during registration for \$15 at <https://www.bikereg.com/sohobikefest>. All riders registered in the UCI events MUST hold an active and valid international license, not just a UCI ID.

NICA Parents and Athletes:

USA Cycling categories differ from NICA categories. Category change requests must be submitted prior to the event through the rider's USA Cycling account. The chart below is listed as a guide but does not guarantee category reciprocity.

- Cat 3 - Beginner / Novice (Freshman / JV)
- Cat 2 - Intermediate / Advanced (JV / Varsity)
- Cat 1 - Expert (Varsity)

Please note: USA Cycling racing age and scoring will be based on the athlete's age as of December 31, 2026.



ABOUT SOLDIER HOLLOW

Soldier Hollow is located in the southeasternmost part of Wasatch Mountain State Park, a 21,592 acres nature preserve created in 1961, which became a state park in 1968. The Soldier Hollow venue was one of only three which was built and designed by the Salt Lake Organizing Committee (SLOC) specifically for the 2002 Winter Olympics: with the others being the Utah Olympic Park and Utah Olympic Oval.

During the 2002 games Soldier Hollow hosted the biathlon, cross-country skiing, and Nordic combined events. The venue itself hosted 64,160 biathlon spectators, 99,320 cross-country spectators, and 1,794 Nordic combined spectators during these events. To this day, Soldier Hollow continues to play an integral role in the development of youth and elite Nordic skiers with year-round training, and competitions from junior championships to biathlon world cups. Summer activities have started to grow, with mountain bike events, weddings, and mud runs all being popular.



TECHNICAL GUIDE AND REGULATIONS

This guide covers procedures and information needed to participate in the SoHo Bike Fest taking place June 25-28, 2026.

A 2026 UCI racing license is required for Elite Men, Elite Women, U23 Men, U23 Women, Junior Men and Junior Women. Number plates are also required for training, and riders must be registered before training. Any rider not registered or without a number plate on training day may be subject to a USAC / UCI fine.

Coach plates are available through the online event registration page. A signed waiver is required. Plates will be numbered for identification and distributed at packet pick-up. They must be attached to the bike at all times while on course. Coach plates are assigned to an individual and may not be shared.

Registration

The race is open to all UCI and USA Cycling license holders, including one-day license holders.

Online registration is open at:

<https://www.bikereg.com/sohobikefest>

Pre-Registration closes at 5:00 PM MDT on Wednesday, June 24, 2026. Onsite registration will be available until 3 PM MDT the day prior to each race. Any onsite registrations will incur a **\$50 late fee**. There is no day-of registration.

Permitting

The races shall be sanctioned and run under the regulations of USA Cycling and the UCI.

Friday: (XCC)

- Elite M/W - UCI C3 - US Pro Cup
- Jr. 17-18 M/W - US Pro Cup / USAC XC National Series
- Jr. 15-16 M/W - US Pro Cup / USAC XC National Series
- Jr. 13-14 M/W - US Pro Cup / USAC XC National Series

Saturday: (XCO)

- Elite M/W - UCI C1 - US Pro Cup
- U23 M/W - UCI C1 - US Pro Cup
- Jr. 17-18 M/W - UCI Junior Series - US Pro Cup / USAC XC National Series & Qualifier
- Jr. 15-16 M/W - USAC XC National Qualifier (**Not affiliated with any series**)

Sunday: (XCO)

- 15-16 M/W - US Pro Cup / USAC XC National Series & Qualifier
- 13-14 M/W - US Pro Cup / USAC XC National Series



Licensing

The Soldier Hollow Bike Fest will offer six UCI categories: Elite Men, Elite Women, U23 Men, U23 Women, Junior Men, and Junior Women. UCI regulations will apply to all listed UCI categories, and the UCI Scale of Penalties will be enforced. A valid 2026 UCI International License is required to compete in any UCI category. License holders whose UCI license does not include a photograph must present a valid government-issued photo ID with their racing license at check-in.

A valid USA Cycling (USAC) license and membership, or an approved one-day license where permitted, is required to compete. Athletes must register and compete in the category shown on their license. Onsite USAC license upgrades or downgrades will not be processed and must be completed through USA Cycling prior to the event.



Call-Ups

The call-up procedure will be as follows:

Short Track (XCC):

UCI Elite's/U23's

- UCI ranked riders
- Top 10 US XC Standings
- USA Cycling XCC ranking*
- USA Cycling XCO ranking
- Random

UCI JR 17-18

- UCI ranked riders
- Top 10 US XC Standing
- Top 10 USAC National Series Standing
- USAC XCC ranking*
- USAC XCO ranking
- Random

USAC JR 15-16 and JR 13-14

- Top 10 US XC Standing
- Top 10 USAC National Series Standing
- USAC XCC ranking*
- USAC XCO ranking
- Random

Cross Country Olympic (XCO):

UCI Elite's/U23's

- UCI ranked riders
- Top 16 from event's XCC
- Top 10 US XC Standings
- USA Cycling XCO ranking*
- Random

Call-Ups (continued)

UCI JR 17-18

- UCI ranked riders
- Top 16 from event's XCC
- Top 10 US XC Standing
- Top 10 USAC National Series Standing
- USAC XCO ranking*
- Random

USAC JR 15-16 and JR 13-14

- Top 16 from event's XCC
- Top 10 US XC Standing
- Top 10 USAC National Series Standing
- USAC XCO ranking*
- Random

**We reserve the right to manually place foreign national team riders who do not have USAC rankings.*

- Any race not listed above with more than 30 starters will be called up using USA Cycling rankings.

80% Rule

Per UCI regulations, the 80% rule will be enforced in the UCI Elite, U23 and Junior XCO & XCC races. Riders instructed by commissaires to withdraw at the 80% zone must do so. Riders pulled at 80% will be added in the results according to their position at time of pulling.

USAC Amateur Categories

Amateur categories will be scored and awarded podiums based on the category in which the rider is registered. Fields may be combined to increase start numbers; however, results and podiums will be separated and published according to the registered categories.

Age groups are determined by racing age as of December 31, 2026.

.

SCHEDULE

Schedule and distances subject to change

Wednesday | June 24, 2026

Pre-Registration closes at 5:00 PM MDT. Onsite registration will be available until 3 PM MDT the day prior to each race. Any onsite registrations will incur a \$50 late fee. There is no day-of registration.

Thurs | June 25, 2026

10:00 AM - 12:00 PM	UCI Course Inspection (Course Closed)
11:00 AM - 6:00 PM	Packet pick-up
	Onsite reg open until 3 pm Friday
11:00 AM - 6:00 PM	Team setup
12:00 PM - 6:00 PM	Course pre-ride

Team tech parking reservations:

<https://www.bikereg.com/sohobikefest>

Questions: Jkorn@uolf.org

Friday | June 26, 2026

XCC Short Track Course: 1.2 km, 32 m climbing per lap

7:00 AM - 3:00 PM	Packet pick-up
Onsite Reg open till 3pm for Saturday	
8:30 AM	Junior Men 15-16 Q1 (if over 75 riders) (Top 25 Qualify) - 10 min
8:50 AM	Junior Men 15-16 Q2 (if over 75 riders) (Top 25 Qualify) - 10 min
9:10 AM	Junior Men 17-18 Q1 (if over 75 riders) (Top 25 Qualify) - 10 min
9:30 AM	Junior Men 17-18 Q2 (if over 75 riders) (Top 25 Qualify) - 10 min
9:50 AM	Junior Women 17-18
10:30 AM	U23 Men (Non-UCI)
11:00 AM	Elite Women (UCI C3)
11:30 AM	Elite Men (UCI C3)
12:00 PM	Awards - Morning Starts
1:00 PM	Junior Men 15 - 16 consolation final (no podium)
1:30 PM	Junior Men 17 - 18 consolation final (no podium)
2:10 PM	Junior Men 15 - 16 final
2:50 PM	Junior Men 17 - 18 final
3:20 PM	Open Men 19+
4:00 PM	Junior Women 15-16 / Open Women 19+
4:30 PM	Junior Boys 11-14 (15 mins)
5:00 PM	Junior Girls 11-14 (15 mins)
5:30 PM	Awards - Afternoon Starts

SCHEDULE (CONTINUED)

Saturday | June 27, 2026

7:00 AM - 6:00 PM

Packet pick-up

Onsite Reg open till 3pm for Sunday

XCO Blue (UCI) Course: 4.4 km, 182 m climbing per lap

8:00 AM

Junior Women 17-18

9:45 AM

Junior Men 17-18

11:00 AM

Awards - Junior Men & Women

11:30 AM

Elite Women / U23 Women

1:00 PM

Awards - Elite/U23 Women

1:30 PM

Elite Men

3:00 PM

Awards - Elite Men

3:30 PM

U23 Men

5:15 PM

Awards - U23 Men

XCO Red (Am) Course: 7.9 km, 284 m climbing per lap

5:30 PM

Open Men (13-14 / 15-16 / 17+)

6:45 PM

Open Women (13-14 / 15-16 / 17+)

8:00 PM

Awards - Open

Sunday | June 28, 2026

7:00 AM - 12:00 PM

Packet pick-up only

No onsite registration available

XCO Orange (12U) Course: 4km, 135 m climbing per lap

9:00 AM

Junior Men / Women 12U

XCO Orange (Am) Course: 7.9 km, 135 m climbing per lap

10:00 AM

All Women (15+) (Cat 1/2/3)

11:15 AM

Awards - 12U, All Women

11:30 AM

Cat 1 Men

1:00 PM

13-14 Men / Cat 2/3 Men

1:30 PM

Awards - Cat 1 Men

2:30 PM

Awards - Cat 2/3 Men

Results and Awards

Awards will follow the schedule listed above. All categories listed on BikeReg will be given a podium and subsequent awards. Results will be posted near the awards plaza on the east side of the competition building.

Official results will be posted on:

sohobikefest.com

One2Go Results

Podiums will consist of the top five riders with awards only for the top three finishers.

US XC Open Series

For more information on the series, view the series link below:

<https://www.uscupmtb.com/us-xc-open-series>

UCI Prize List

For more information on the series, view the series link below:

<https://assets.usacycling.org/prod/documents/2026-MTB-USA-Cycling-XCO-National-Series-Regulations.pdf>

XCO Payment Chart

Ranking / Classement	HC					Class 1 / Classe 1		
	XC			DHI	4X	XC		
	M&W / H&F Elite	M&W / H&F U23*	M&W / H&F Juniors	M&W / H&F	M&W / H&F	M&W / H&F Elite	M&W / H&F U23*	M&W / H&F Juniors
1st / 1er	1'000 €	400 €	200 €	1'000 €	500 €	600 €	265 €	130 €
2nd / 2ème	800 €	265 €	130 €	800 €	350 €	500 €	200 €	100 €
3rd / 3ème	600 €	200 €	100 €	600 €	200 €	400 €	130 €	80 €
4th / 4ème	500 €	165 €	80 €	500 €	100 €	300 €	100 €	65 €
5th / 5ème	400 €	130 €	65 €	400 €	50 €	250 €	65 €	55 €
6th / 6ème	300 €	100 €	50 €	300 €	50 €	200 €	50 €	45 €
7th / 7ème	250 €	80 €	45 €	250 €	50 €	150 €	30 €	40 €
8th / 8ème	200 €	65 €	30 €	200 €	50 €	125 €	30 €	30 €
9th / 9ème	150 €	50 €	25 €	150 €		100 €	30 €	25 €
10th / 10ème	100 €	30 €	20 €	100 €		50 €	30 €	20 €
Total	4'300 €	1'485 €	745 €	4'300 €	1'350 €	2'675 €	930 €	590 €
Total M&W / H&F	8'600 €			8'600 €	2'700 €	5'350 €		

XCC Payment Chart

Ranking / Classement	Class 2 / Classe 2						Class 3 / Classe 3		
	XC			DHI	4X	XC			
	M&W / H&F Elite	M&W / H&F U23*	M&W / H&F Juniors	M&W / H&F	M&W / H&F	M&W / H&F Elite	M&W / H&F U23*	M&W / H&F Juniors	
1st / 1er	€ 250		€ 80	€ 250	€ 200	€ 200		€ 65	
2nd / 2ème	€ 200		€ 65	€ 200	€ 150	€ 150		€ 50	
3rd / 3ème	€ 150		€ 50	€ 150	€ 125	€ 100		€ 30	
4th / 4ème	€ 125		€ 30	€ 125	€ 100	€ 75		€ 25	
5th / 5ème	€ 100		€ 25	€ 100	€ 90	€ 50		€ 20	
6th / 6ème	€ 90			€ 90	€ 80				
7th / 7ème	€ 80			€ 80	€ 70				
8th / 8ème	€ 70			€ 70	€ 60				
9th / 9ème	€ 60								
10th / 10ème	€ 50								
Total	€ 1'175		€ 250	€ 1'065	€ 875	€ 575		€ 190	
Total M&W / H&F	€ 2'350			€ 2'130	€ 1'750	€ 1'150			

UCI Points

Rang / Place	CHAMP. NATIONAUX NATIONAL CHAMP.			Hors Classe / Continental Series		Classe 1		Classe 2 / COUPE du MONDE XCE / XCE WORLD CUP / Jeux régionaux / Regional Games	Classe 3 / Jeux régionaux / Regional Games	XCO JUNIOR SERIE	XCO Junior / Continental Series
	Elite	U23*	Junior	Elite	U23*	Elite	U23*	Elite	Elite	Junior	Junior
1	100	50	40	100	60	60	15	30	10	90	20
2	90	35	30	80	40	40	10	20	6	70	18
3	70	25	20	60	30	30	5	15	4	60	16
4	60	15	10	50	25	25	3	12	2	50	14
5	50	5	5	40	20	20	1	10	1	40	12
6	40	x	x	35	18	18	x	8	x	35	10
7	30			30	16	16		6		30	8
8	20			27	14	14		4		27	6
9	10			24	12	12		2		24	4
10	5			22	10	10		1		22	2
11	x			20	8	8		x		20	x
12				18	6	6				18	
13				16	4	4				16	
14				14	2	2				14	
15				12	1	1				12	
16				10	x	x				10	
17				9						9	
18				8						8	
19				7						7	
20				6						6	
21				5						5	
22				4						4	
23				3						3	
24				2						2	
25				1						1	
26				x						x	

Packet Pickup & Parking

Participants must park in General Parking outside of the venue and walk to the Competition Building

Team Parking

*Reserve your Team (Tech Parking) - <https://www.bikereg.com/sohobikefest>

Questions: Jkorn@uolf.org

General Parking

Parking is available on a first-come first-served basis. There will be no priority parking available at the event.

Overnight parking allowed with OVERNIGHT parking pass, can be purchased here:

<https://www.bikereg.com/sohobikefest>. No overnight security.

Directions to Venue

Soldier Hollow is located 55 miles and approximately one (1) hour from the Salt Lake International Airport.

Address: 2002 S. Olympic Dr., Midway, UT 84049

Nearby towns:

- Midway: 3 Miles
- Heber City: 6 Miles
- Park City: 21 Miles

- Orem: 24 Miles
- Salt Lake City: 49 Miles

Lodging

Heber Valley is home to a variety of lodging and dining options for teams, athletes, families, and friends, among them are Homestead and Zermatt Utah in Midway, Utah. Contact information can be found for all options on the local chamber website at www.gohebervalley.com.

Zermatt Utah

784 West Resort Drive, Midway, UT 84049

- Contact: Zermatt Sales
- rfp@zermattresorts.com

Residences at Utah Olympic Park

Book a stay to take advantage of:

- Park City's best nightly lodging rates
- Modern Hotel Rooms
- Unbeatable proximity to the Utah Olympic Park and surrounding ski resorts
- Guest kitchen and catering space to take care of all your meal needs.
- Complementary meeting/video review space

More information about our facility and accommodation can be found [here](#)

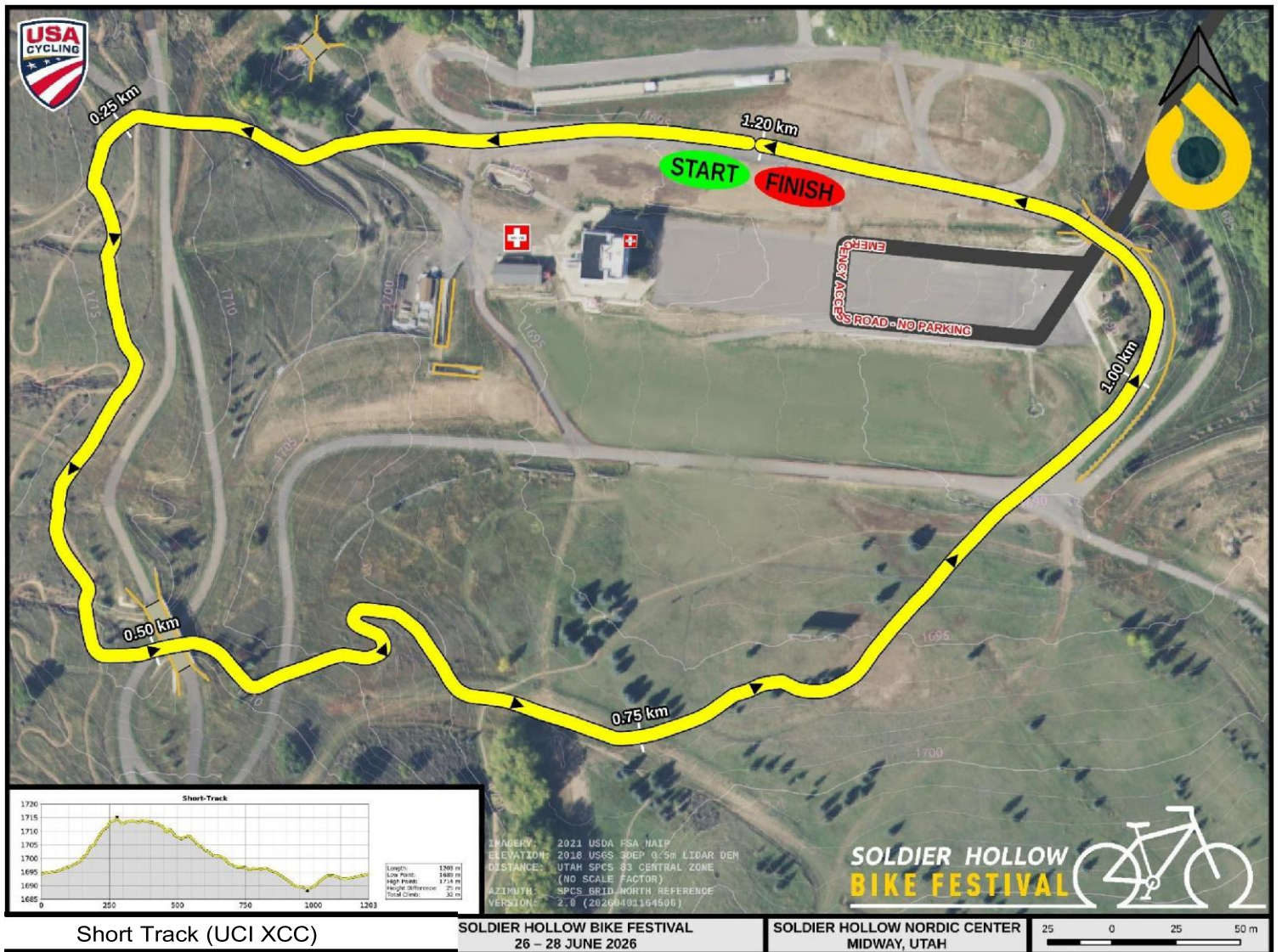
Local Camping Options:

<https://stateparks.utah.gov/parks/wasatch-mountain/>

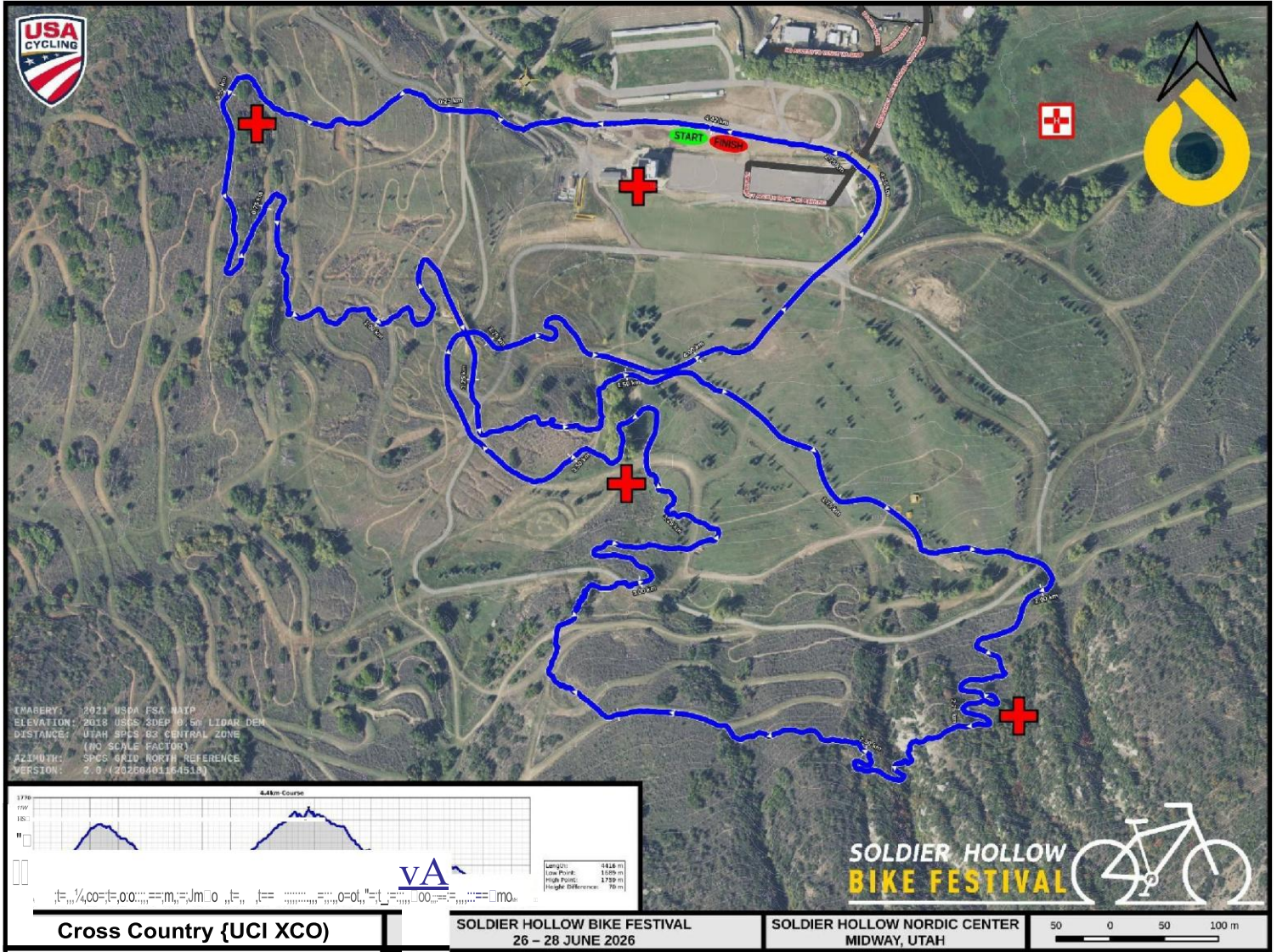
<https://www.gohebervalley.com/camping/>

Course Maps

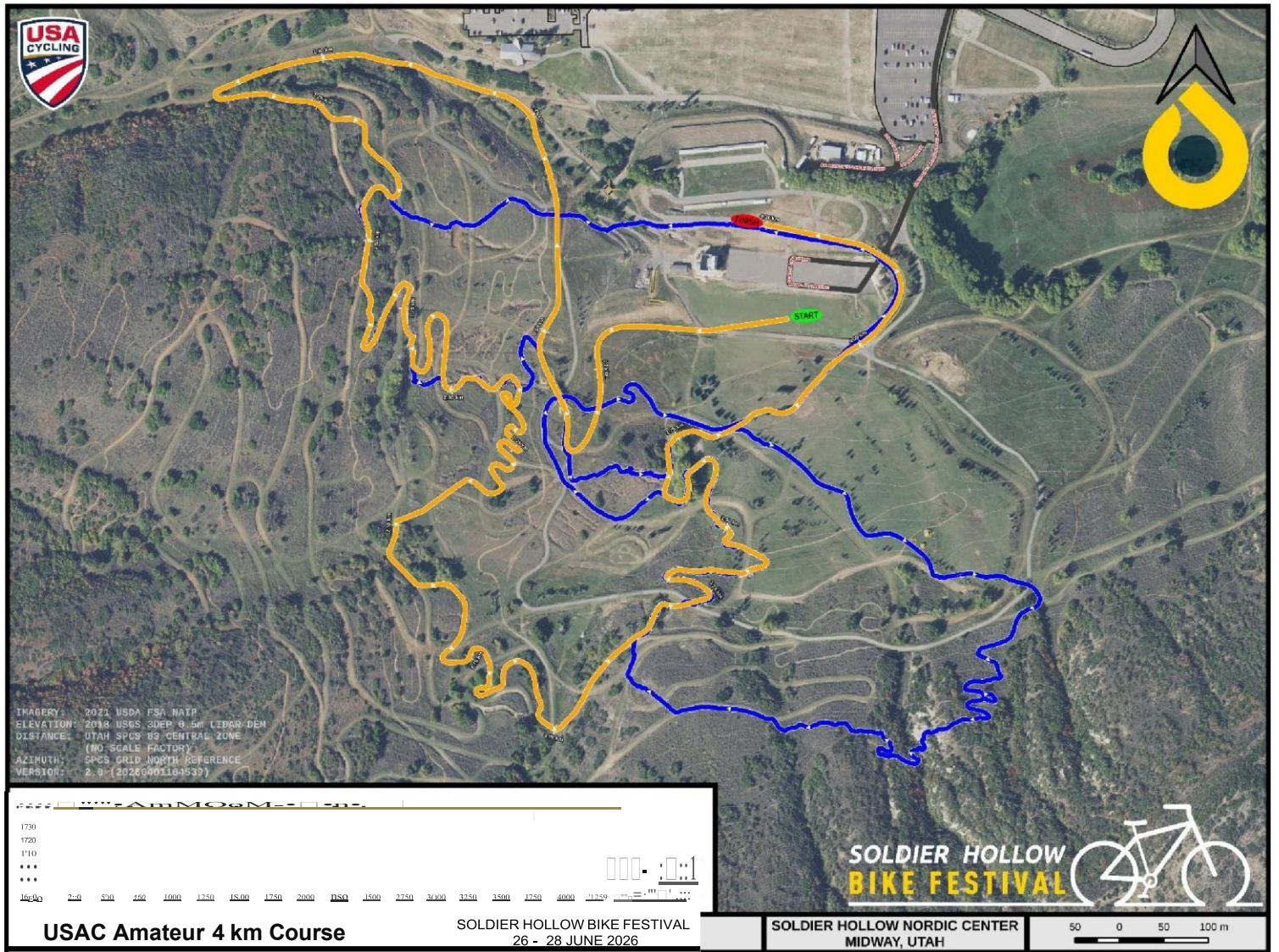
Short Track (XCC) Course



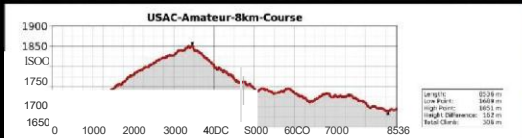
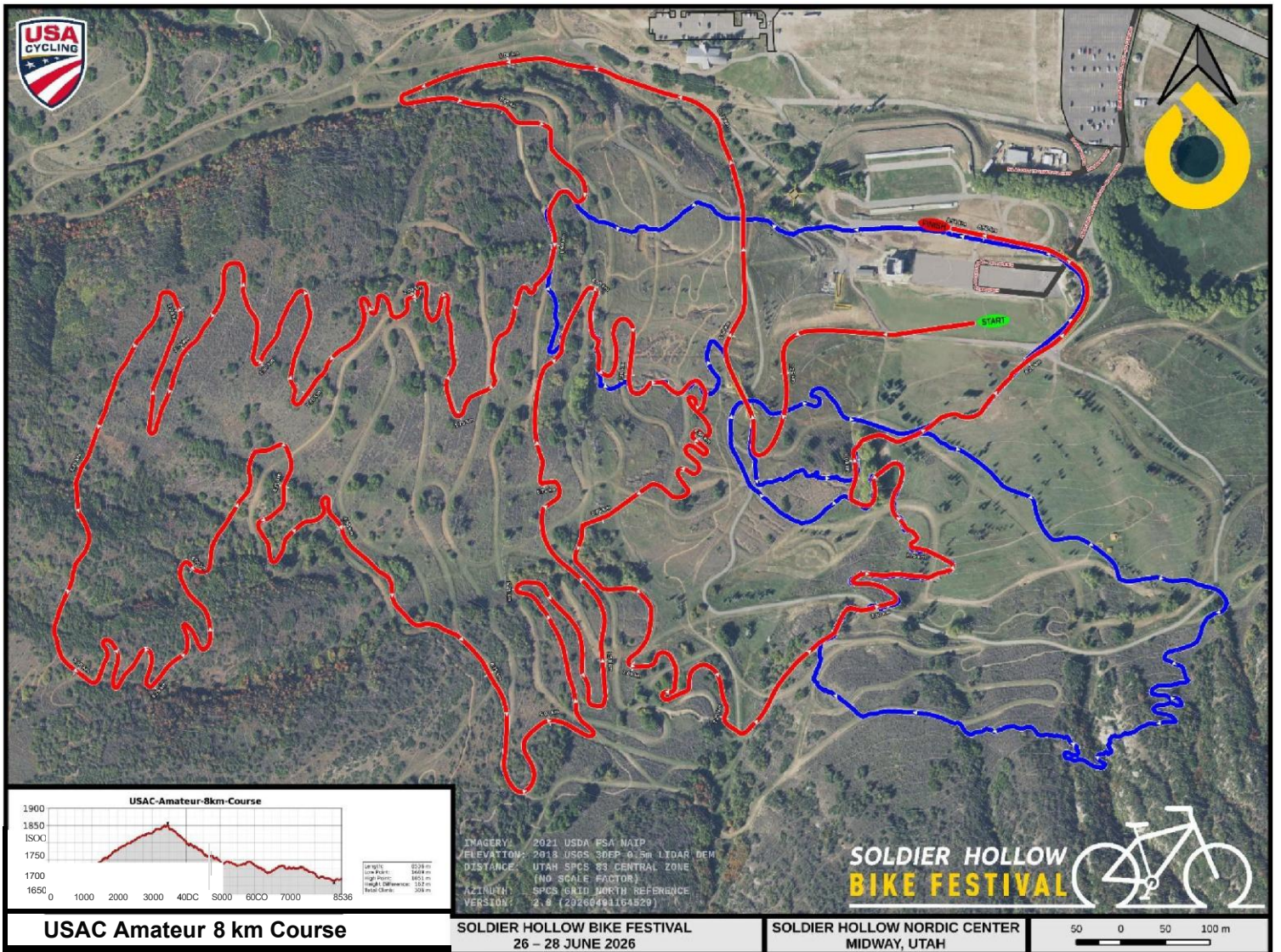
UCI (XCO) Course



Amateur short (XCO) Course



Amateur long (XCO) Course



IMAGERY: 2021 USDA FSA NAIP
 ELEVATION: 2013 USGS 3DEP 0.5m LIDAR DEM
 DISTANCE: UTM SPCS 83 CENTRAL ZONE
 (NO SCALE FACTOR)
 AZIMUTH: SPCS GRID NORTH REFERENCE
 VERSION: 2.0 (202406091164529)

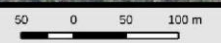
SOLDIER HOLLOW
BIKE FESTIVAL



USAC Amateur 8 km Course

SOLDIER HOLLOW BIKE FESTIVAL
 26 - 28 JUNE 2026

SOLDIER HOLLOW NORDIC CENTER
 MIDWAY, UTAH



Venue Map



Paid Tech Space Parking

